

WASHINGTON NETWORK  
ANNUAL REPORT

2013 - 2014



Communities  
In Schools

Washington

We're Changing the Picture



# The Problem

About 1 in 4 high school seniors in Washington fail to graduate on time.<sup>1</sup> Students who fail to graduate lose hope for their future and ultimately cost taxpayers approximately \$14,000 annually.<sup>2</sup> Poverty is the best predictor of school failure and in 2013-14, 46% of all Washington students were participating in the state's Free & Reduced Lunch Program<sup>1</sup>.

<sup>1</sup>OSPI Washington State Report Card

<sup>2</sup>Clive Bellfield, Harry Levin, and Rachel Rosen, "The Economic Value of Opportunity Youth"



## PARTNER STORY — SERVE WASHINGTON

Entering its third year, a grant partnership between Serve Washington and Communities In Schools of Washington is currently funding the work of 22 AmeriCorps members who are hard at work integrating student supports to help students stay in school across our state.

The AmeriCorps program engages service volunteers to meet critical community needs nationwide. Federally funded, the program is administered here by Serve Washington, which recognizes CIS' ability to respond to the demand for such services to help vulnerable young people access the resources they need to stay on track at school. Hundreds more students are served because of the partnership, and students who overcome barriers increase their chances to learn at school, and, in turn, their chances to graduate with their peers.

Debbie Schuffenhauer, Executive Director of Serve Washington, points to the CIS data-driven approach as a compelling attribute in a partner. "We invest in evidence-based organizations, which is a strength of CIS. It's apparent to us that CIS is committed to operating a high quality AmeriCorps program."

## The Solution

Part of the nation's largest and most effective dropout prevention organization, Communities In Schools of Washington helps students at risk of dropout to rise above their circumstances.

**School success (or failure) is the product of multiple factors at the individual, family, and school levels. Providing an array of supports in a coordinated fashion is a more effective strategy than focusing on one."**

*— From Child Trends, "Integrated Student Supports"  
(See report at [ciswa.org/what-we-do/publications](http://ciswa.org/what-we-do/publications).)*

*Communities In Schools partners directly with schools, forging strong relationships with districts and building principals, as well as externally with community leaders and local organizations to enable CIS to make significant impacts on struggling students—last year 99% of secondary students served stayed in school. Working with school staff, the site coordinators identify students in danger of dropping out, assess what resources the students need, and provide those resources through community partnerships.*

The evidence-based model of integrated student supports makes CIS the only organization proven to decrease dropout rates and increase graduation rates.<sup>1</sup> An economic impact study also found that for every \$1 invested in CIS, \$11.60 comes back to the community.<sup>2</sup>

<sup>1</sup>ICF National Evaluation

<sup>2</sup>EMSI Economic Impact Study

## Looking Ahead

CIS of Washington's Network provided individualized services to more than 4,400 students last school year – an 8% increase – while maintaining strong success working with our school partners to keep kids in school. The ability to cost-effectively expand, without sacrificing quality of support to students is one reason we have been invited into new school districts for 2014-15 and have the opportunity to serve 12 more schools in several of our current partner districts as well.





## CHANGING THE PICTURE IN WASHINGTON

The portrait of a dropout today is much different than old stereotypes and the reasons more complex.

Poverty, language barriers, homelessness, health and mental health issues, and substance abuse, can all limit a student's ability to see, much less pursue, his or her potential.

When a student drops out, it's a long process of disengaging—not a moment in time.

There are countless opportunities for us to surround these young people with the resources needed to address the issues they face. Communities In Schools of Washington facilitates the right connections and brings resources directly to students at school to help them be the best learners possible.

CIS of Washington is pleased that new schools and districts have

recently reached out to us to build the close partnerships needed to reach even more kids statewide.

I'm proud that in the last 6 years, we've increased the number of students served intensively by 59%, and our quality of services have stayed strong—in 2013-14 we worked with schools to help 99% of the students we served stayed in school.

We gratefully acknowledge the support of our board of directors, school district partners, foundations, corporations and individual donors. We are changing the picture for students—and communities—across Washington.

Susan Richards,  
State Director,  
Communities  
In Schools  
of Washington



## Student Success

For families in poverty, the winter season magnifies struggle. Cold weather brings a need for warm clothes and financial assistance for heating the home. And the holidays increase needs for resources which can be slim.

“Through Communities In Schools, a local church ‘adopted’ some families for the holidays,” said one CIS Site Coordinator recently. “One family had three kids and a single Mom, who worked nights, but was barely able to make rent. Her middle-school son was struggling with depression when I began working with him.

First, I was able to get some of the family's basic needs met, such as toilet paper, toothpaste, and soap. An outreach to PTSA helped get donations of food and gift cards to the grocery.

I also got the student a new coat which he was so happy about. He tried on a few and couldn't decide which one he liked most. It was a sweet reaction to just having options to choose from. We formed a bond during this time as I worked tirelessly to get his family what they needed.

Soon after, he began stopping in almost every day at school, needing replacement supplies his Mom couldn't afford, or sometimes, using supply needs as an excuse to talk about what troubled him. Receiving our support during the critical cold winter months helped him feel like a ‘normal’ kid. He saw I genuinely cared and knew he could trust me.

Proving to students that someone cares for them and they do not have to be “lost” in poverty and miss opportunities in life. That is the success of CIS.”



## NETWORK REVENUE COMBINED

- 21%** Corporations
- 15%** Foundations
- 15%** Federal & State Grants
- 20%** City/County/Schools
- 20%** Individuals & Events
- 8%** Nonprofits
- 1%** Other

Total Revenue **\$4,237,974**

In-kind Revenue **\$845,220**  
(not included)



The following is a list of contributors who supported Communities In Schools of Washington's Network from July 1, 2013 to June 30, 2014. A sincere thank-you to all of our supporters who are changing the picture for students across Washington.

### VALEDICTORIANS \$100,000 +

Communities In Schools, National  
Costco Wholesale  
Discuren Charitable Foundation  
Serve Washington/AmeriCorps

### \$50,000 +

Bill and Melinda Gates Foundation  
City of Renton  
Gary E. Milgard Family Foundation  
Pierce County Community Connections  
George and Dion Russell  
U.S. Bank Foundation  
United Way of King County  
United Way of Spokane County

### \$25,000 +

City of Kent  
City of Lakewood  
City of Tacoma  
Empire Health Foundation  
First Financial NW Foundation  
IBM Corporation  
IKEA Seattle  
Master Builders' Association  
Northwest Children's Fund  
Safeco Insurance Foundation  
Sills Foundation  
The Seattle Foundation  
U.S. Department of Education -  
21st Century Learning Center  
United Way of Pierce County

### \$10,000 +

Bank of America Charitable Foundation  
Big Brothers Big Sisters  
Break-a-thon Martial Arts

Capital One  
Carmax Foundation  
City of Federal Way  
Coach Foundation  
Denali Advanced Integration  
EMC<sup>2</sup>  
Franciscan Foundation  
Gig Harbor Garden Tour Association  
Greater Tacoma Community Foundation  
Hyatt Hotels  
King County, Office of Pete von Reichbauer  
Matisia Consultants  
May and Stanley Smith Charitable Trust  
RealNetworks Foundation  
Toyota of Renton  
Union Pacific Foundation  
Walker's Renton Subaru/Mazda  
Wells Fargo  
Western Washington Toyota/Seattle  
Seahawks False Start Program

### In-Kind \$10,000 +

Costco Wholesale  
Mars Hill Church  
World Vision

### School District Partners

Auburn School District  
Bellingham School District  
Central Valley School District  
Cheney School District  
Clover Park School District  
Federal Way Public Schools  
Kent School District  
Nooksack Valley School District  
Peninsula School District  
Puyallup School District  
Renton School District  
Seattle Public Schools  
Spokane Public Schools  
Tacoma School District

We do our best to maintain an accurate list, so if you see an error, please call 253.248.1991 ext 22.

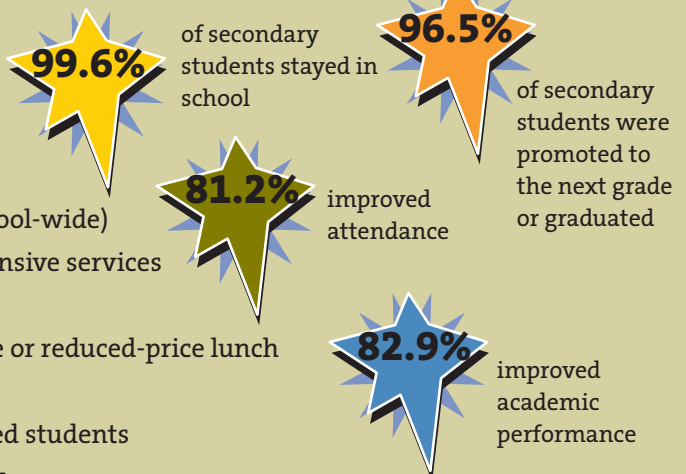
## Board of Directors

Chair - Doug Martin, *AT&T*  
Treasurer - Sean Avant, *Microsoft*  
Secretary - Megan O'Brien, *Threshold Group*  
Aline Carnahan, *Community Volunteer*  
Brenda Croft, *McGladrey*  
Donna Foxley, *Retired, Department of Education*  
Karol Gadwa, *Retired, Education Administration*  
Tim Haser, *Costco Wholesale*  
Octavio Morales, *TierPoint*  
Maria Muñoz, *VMware*  
Nick Muy, *Expedia*  
Scott Nagel, *Redfin Real Estate*  
Rona Pryor, *Social Venture Partners International*  
Brian Rayfield, *Morgan Stanley*



## 2013-2014 ACHIEVEMENTS

For students served intensively:



## YEAR IN REVIEW

**63,815** students served (school-wide)  
**4,412** students received intensive services  
**68%** students of color  
**89%** students eligible for free or reduced-price lunch  
**14** school districts served  
**74** Site Coordinators supported students  
**2,051** community volunteers

**The mission of Communities In Schools is to surround students with a community of support, empowering them to stay in school and achieve in life.**

