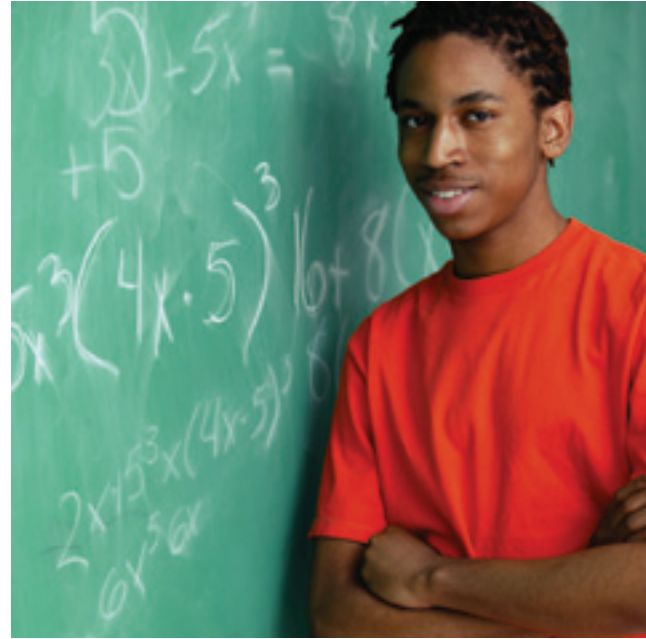




Communities In Schools

Washington



**Surrounding students with
a community of support.**

2015 - 2016
WASHINGTON NETWORK ANNUAL REPORT

Good Return on Investment

Every dollar invested in Communities In Schools to help students stay in school creates \$11.60 of economic benefit when they graduate and contribute to their communities.

(EMSI Economic Impact Study, 2012)

Donate With Confidence

Communities In Schools of Washington is recognized by Guidestar as a Silver Participant for our on-going efforts in nonprofit transparency, so you can feel confident knowing your donation is going to a proven and trusted organization.



A STUDENT SUCCESS STORY: DARIUS

Darius, a senior at Thomas Jefferson High School, dreamed of playing in the NBA and pursuing his interest in architecture. In reality, his family was homeless, he was failing classes and some recent behavioral issues resulted in disciplinary action at school. Like so many students with barriers to success, he was in need of some basic resources and a caring adult to assist him with these challenges. Darius was referred to Communities In Schools (CIS) and began working with Soraia Francisco, the CIS site coordinator at his school.

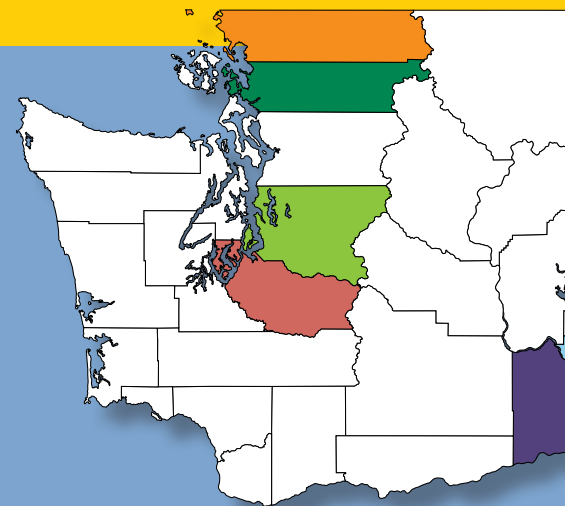


The first thing Soraia did was provide Darius with ongoing access to breakfast and lunch, hygiene supplies, clothing and school supplies. To address his emotional needs, Soraia partnered with Auburn Youth Resources to create an after-school group for students needing counseling, providing a space for Darius to connect with peers experiencing similar challenges. Soraia checked in with Darius daily. She provided academic assistance and helped him develop academic skills like time management and goal setting.

As the end of the school year approached, Darius was passing all of his classes and had no further discipline issues. On graduation day, Darius received his diploma along with the rest of his senior class. Soraia was there to celebrate with Darius, she was proud of him and his accomplishments. Darius is currently attending classes at Green River College. He is focused on achieving his post-high school goals of playing in the NBA and becoming a history teacher and basketball coach.

INTEGRATED STUDENT SUPPORTS AND THE COMMUNITIES IN SCHOOLS MODEL

At the heart of Communities In Schools' (CIS) approach is the concept of Integrated Student Supports, or wraparound services. Our unique model places trained site coordinators inside schools to identify at-risk students. Working with school leaders and community partners, the site coordinators provide these students with the services and supports—food, school supplies, health care, counseling, academic assistance, mentorship, guidance etc.—needed for academic success. The CIS model of Integrated Student Supports can be adapted to meet each community's unique needs, allowing CIS to deliver needed resources so students can focus on learning.



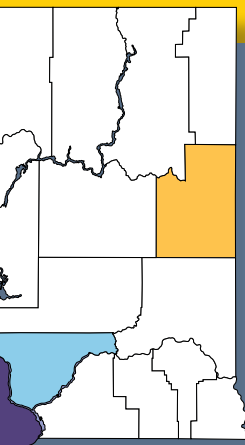
Communities In Schools began operating in Washington in 1991. In the 2015-16 school year, CIS in Washington served 72,000 students in 20 school districts through 12 affiliates. Our services were offered in 161 schools across Washington. To find your nearest Communities In Schools affiliate please visit our website at www.ciswa.org.

GOAL ACHIEVEMENT

▶ SECONDARY STUDENTS



▶ CASE MANAGED STUDENTS IN ALL GRADES:



SCHOOL DISTRICT PARTNERS

- Auburn School District
- Bellingham School District
- Cheney School District
- Clover Park School District
- Federal Way Public Schools
- Ferndale School District
- Kennewick School District
- Kent School District
- Medical Lake School District
- Meridian School District
- Mt. Vernon School District
- Peninsula School District
- Prosser School District
- Puyallup School District
- Renton School District
- Richland School District
- Seattle Public Schools
- Spokane Public Schools
- Tacoma School District
- Tukwila School District

Network at a Glance

53,134 students benefited from CIS ISS model

Of those:

48,464 received school-wide services

4,670 received case-managed support

- **90%** economically disadvantaged
- **68%** students of color
- **15%** homeless

An additional **19,207** students received other support services

18,242 parents engaged



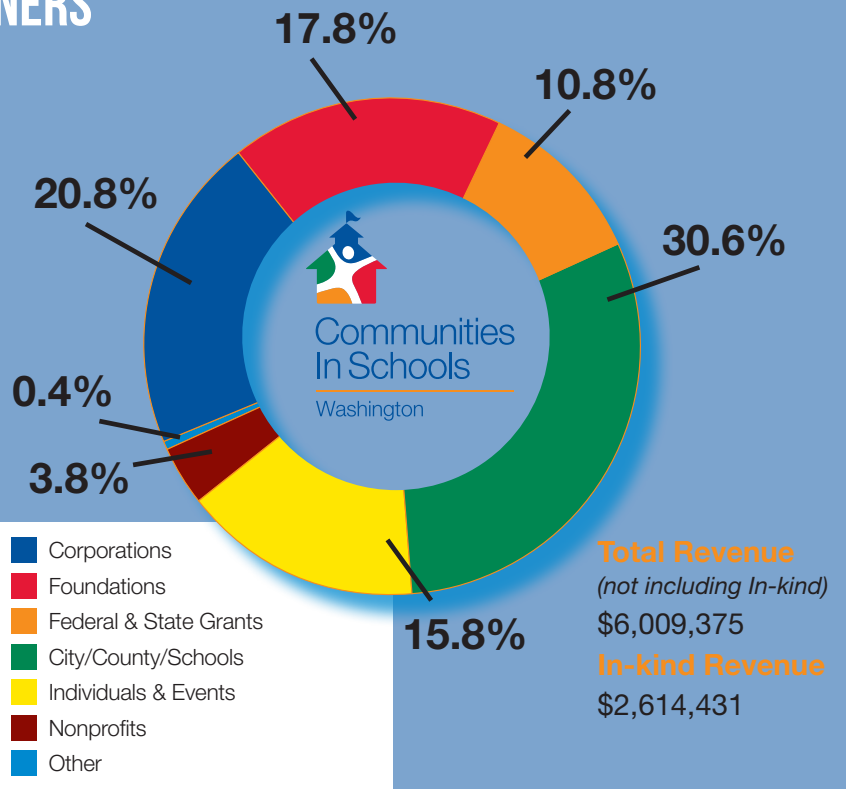
Services delivered by:

90 Site Coordinators **33** AmeriCorps Members

502 Community Partners

1,605 Community Volunteers

NETWORK REVENUE



84% OF OUR BUDGET GOES DIRECTLY TO PROGRAM EXPENSES

The **Achievement Circle** recognizes contributions to any member of the Communities In Schools of Washington statewide network between July 1, 2015 and June 30, 2016. Every dollar is critical and we express our sincere thanks to everyone who supported us this year.



VALEDICTORIANS

\$100,000 +

Altria
AT&T Foundation
City of Seattle
Costco Wholesale
Discuren Charitable Foundation
Serve Washington
U.S. Department of Education
United Way of King County

\$50,000 +

City of Renton
College Spark Washington
Pierce County Community Connections
Planned Parenthood
Safeco Insurance Foundation
United Way of Pierce County

\$25,000 +

City of Kent
City of Lakewood
Gonzaga University
Greater Tacoma Community Foundation
Milgard Family Foundation
Norcliffe Foundation
Northwest Children's Fund
Pierce County
Renton Community Foundation
Silver Family Foundation
The Russell Family Foundation

\$10,000 +

Alaska Airlines
Anonymous
Carmax Foundation
Cash America
Communities In Schools, National

Davis Love Foundation
Denali Advanced Integration
Franciscan Foundation
Fred Meyer
Fuches Foundation
IKEA of Seattle
Inland Northwest Community Foundation
Key Bank Foundation
Liberty Mutual Foundation
Matisia Consultants
Moranco
Multicare
Not Yet Foundation
Toyota of Renton
Umpqua Bank
U.S. Bank Foundation
Walker's Renton Subaru
Washington State Achievement Council
Washington State DSHS-DBHR

Wells Fargo
Western Washington Toyota/ Seattle Seahawks False Start Program
Whatcom County Public Health Department
Whatcom Family and Community Network

In-Kind Donations

\$10,000 +

Columbia Bank
Costco Wholesale
Mountain View Community Center
New Life Church of Renton
Pierce County Dental Society
Puget Sound Orthopedics
Sight for Students
Tacoma Rainiers
World Vision

We do our best to maintain an accurate list, so if you see an error, please call 253.248.1991 ext 122.

Board of Directors

Chair - Doug Martin

AT&T

Vice Chair - Aline Carnahan

Community Volunteer

Treasurer - Brenda Croft

RSM US LLP

Secretary - Tim Haser

Costco Wholesale

Darren Alger

Matisia Consultants

Jennifer Chason

Microsoft

Michael Edmonds

Parker, Smith, & Feek, Inc.

Dan Golden

TierPoint

Julie Kerby

Starbucks

Conan Lee

Jones Lang LaSalle

Shawn McWashington

HomeStreet Bank

Octavio Morales

TierPoint

Nick Muy

Expedia

Megan O'Brein

NAES

Brian Rayfield

Morgan Stanley

Robert Stadler

U.S. Bank



**Communities
In Schools**

Washington

Volunteer, donate, and connect at ciswa.org.

1010 South 336th Street, Ste 205 Federal Way, WA 98003 253.248.1991 www.ciswa.org