

Board of Directors

Chair - Aline Carnahan

Community Volunteer

Vice Chair - Robert Stadler

The Commerce Bank of Washington

Treasurer - Brenda Croft

RSM US LLP

Secretary - Tim Haser

Costco Wholesale

Blake Harris

Fierce, Inc.

Brian Rayfield

Morgan Stanley

Conan Lee

JLL

Darren Alger

Matisia Consultants

Dan Golden

Centeris Data Centers

Doug Martin

AT&T

Jennifer Chason

Microsoft

Julie Kerby

Starbucks

Mary Porter

Nordstrom

Megan O'Brien

Doosan GridTech

Michael Edmonds

Parker, Smith, & Feek, Inc.

Nick Muy

Expedia

Octavio Morales

TierPoint

Shawn McWashington

HomeStreet Bank

The **Achievement Circle** recognizes contributions to any member of the Communities In Schools of Washington statewide network between July 1, 2016 and June 30, 2017. Every dollar is critical and we express our sincere thanks to everyone who supported us this year.



VALEDICTORIANS

\$100,000 +

Costco Wholesale

Discuren Charitable Foundation

Serve Washington

U.S. Department of Education

United Way of King County

Norcliffe Foundation

Planned Parenthood

Satterberg Foundation

The Russell Family Foundation

United Way of Spokane County

Wells Fargo

Silver Family Foundation

State of Washington Office
of Superintendent of Public
Instruction

TOTE Maritime Alaska

U.S. Bank Foundation

Umpqua Bank

Union Pacific

United Way of Skagit County

Walker's Renton Subaru

Washington State Achievement
Council

Western Washington Toyota/
Seattle Seahawks False Start
Program

Weyerhaeuser

Whatcom Community Foundation

\$10,000 +

Capital One Services

CarMax Foundation

Cash America

Cisco Systems, Inc.

City of Lakewood

City of Spokane

City Year

Corporation for National &
Community Service

Dell EMC Corporatio

Denali Advanced Integration

Everett Foundation

Express Employment

Franciscan Foundation

Green River College

Hyatt Corporation

Liberty Mutual Foundation

Matisia Consultants

Nordstrom Foundation

Northern Quest

Northwest Children's Fund

Octavio and Diana Morales

Pierce College

Powell Family Foundation

In-Kind Donations

\$10,000 +

Anonymous

Corporation for National and
Community Service

Costco Wholesale

Evergreen Middle School

Firefighter's Coats for Kids
Foundation

Garvey Schubert Barer

New Life Church Renton

S.H.A.K.E.

Sport Clips

Threshold Group

Washington State Fair

World Vision

\$50,000 +

AT&T Foundation

City of Renton

College Spark Washington

Greater Tacoma Community Foundation

King County Housing Authority

Medina Foundation

Pierce County

Safeco Insurance Foundation

United Way of Pierce County

Whatcom County Public Health
Department

\$25,000 +

Altria

American Gift Fund

Anonymous

City Of Federal Way

City of Kent

Gary E. Milgard Family Foundation

Inland Northwest Community
Foundation

MultiCare

New York Life

In schools to shape futures.



Communities
In Schools

Washington

2016-2017

Washington Network Annual Report

Good Return on Investment

Every dollar invested in Communities In Schools to help students stay in school creates \$11.60 of economic benefit when they graduate and contribute to their communities.
(EMSI Economic Impact Study, 2012)

Donate With Confidence

Communities In Schools of Washington is recognized by Guidestar as a Silver Participant for our on-going efforts in nonprofit transparency, so you can feel confident knowing your donation is going to a proven and trusted organization.



Network at a Glance

73,031 students benefited from CIS model of Integrated Student Support

Of those:

- 51,632** received school-wide services
- 4,971** received case-managed support
- 92%** economically disadvantaged
- 69%** students of color
- 16%** homeless

An additional **16,428** students received other support services

16,007 parents engaged

School District Partners

- Auburn School District
- Bellingham School District
- Central Valley School District
- Cheney School District
- Clover Park School District
- Eastmont School District*
- East Valley School District*
- Federal Way Public Schools
- Ferndale School District
- Kennewick School District
- Kent School District
- Medical Lake School District
- Meridian School District
- Mt. Vernon School District
- Pasco School District
- Peninsula School District
- Prosser School District
- Puyallup School District
- Renton School District
- Richland School District
- Seattle Public Schools
- Spokane Public Schools
- Tacoma School District
- Tukwila School District
- Tumwater School District**
- West Valley School District*
- Yelm School District**

* Expansion district for 2017-2018

** TOGETHER! partnership

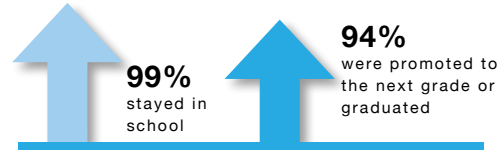
Services delivered by:

- 104** Site Coordinators
- 28** AmeriCorps Members
- 689** Community Partners
- 1,891** Community Volunteers

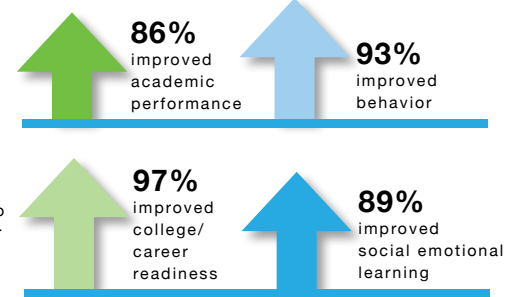


Goal Achievement

▶ SECONDARY STUDENTS



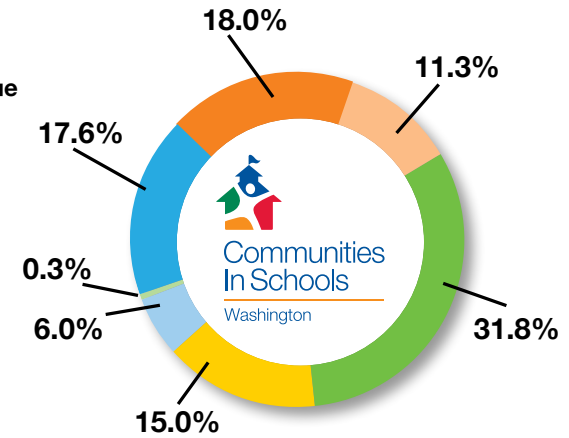
▶ CASE MANAGED STUDENTS IN ALL GRADES:



Network Revenue

Total Revenue (not including In-kind) **\$6,620,089**
In-kind Revenue \$999,648

- Corporations
- Foundations
- Federal & State Grants
- City/County/Schools
- Individuals & Events
- Nonprofits
- Other



83% OF OUR BUDGET GOES DIRECTLY TO PROGRAM EXPENSES

