

2023-2024

ANNUAL REPORT

#AllinforKids



Table of Contents

Who We Are.....	3
Mission	
Our Vision	
Our Values.....	4
Our Unique Role	
Our Network Commitment	
Organizational Structure.....	5
Our Footprint.....	6
Why CISWA.....	7
Statewide Challenges	
Supports & Services.....	8
Our Impact.....	9
Statewide Comparison	
Tackling Challenges with Collaboration.....	10
State & Affiliate Financials.....	11
About Us.....	12



Who We Are

Mission

Our mission is to surround students with a community of support, empowering them to stay in school and achieve in life.

Our Vision

We envision a future rooted in educational equity in which every young person in Washington State has the resources and community support needed to thrive.



At Communities In Schools we believe that every student, regardless of race, gender, ability, zip code, or socioeconomic background has what they need to realize their full potential in school and beyond. We walk by their side, in their communities, to challenge the systems and barriers that stand between them and their success in life.

Who We Are

Our Values



Equity

We believe the urgency of educational inequity requires us to be brave in closing the opportunity gap for young people, their families, and communities.



Youth Centered

We believe young people should have a voice in anything we do for them and on their behalf.



Collaboration

We believe transformative impact is possible when we work together in deep collaboration.



Integrity

We believe we can take on difficult and complex issues when we show up with honesty, mutual respect, transparency, and accountability.



Innovation

We believe that innovation is critical to solving root problems and to respond to changes in our community.

Our Unique Role & Purpose as the State Office

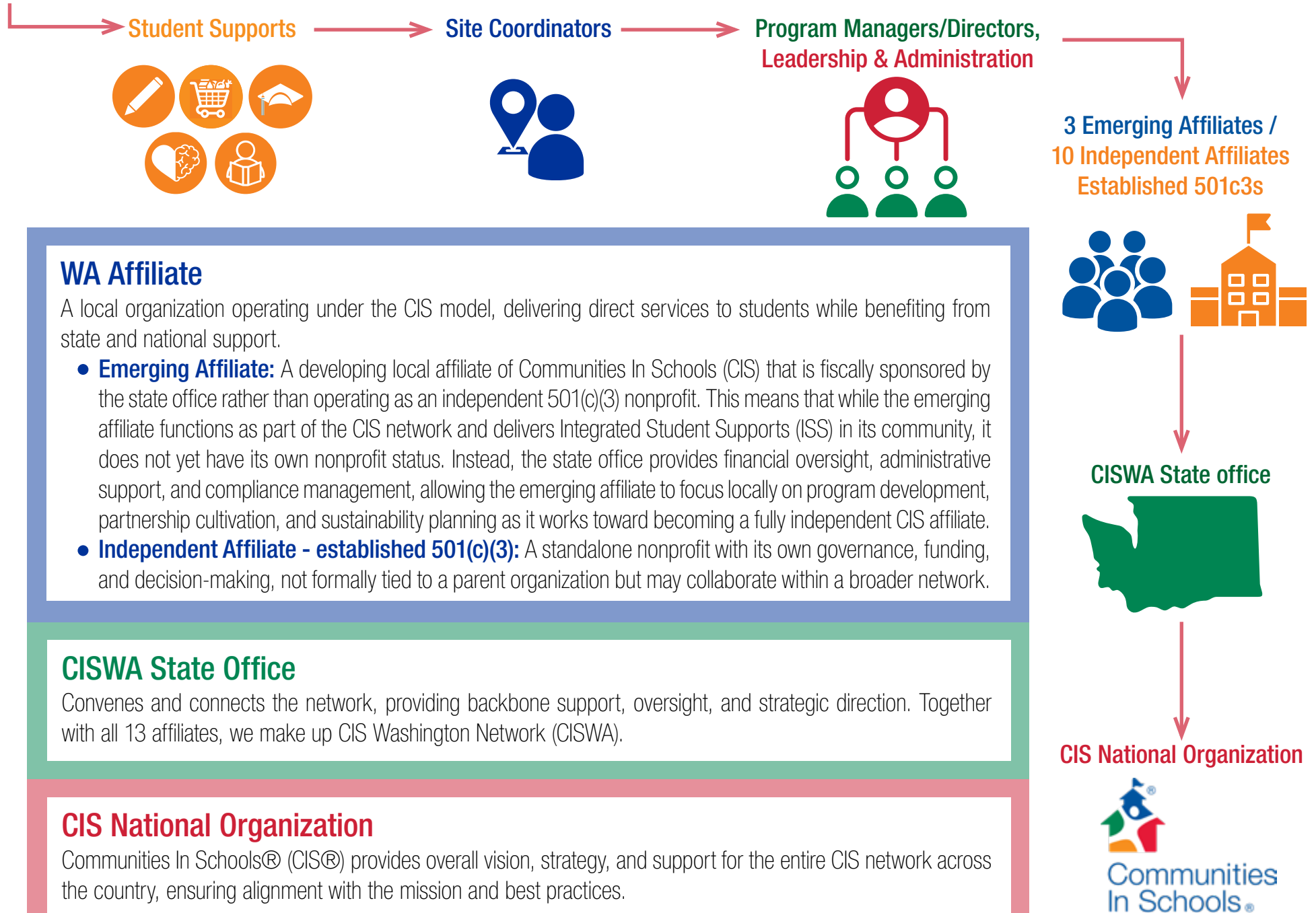
As the State Office, we serve a unique role in the Communities In Schools of Washington (CISWA) Network. Our role is to hold the center of the network strategy and serve as a support structure and facilitate connection within the CISWA Network. We do this in a variety of ways, including:

- Mobilize resources in support of the Network's shared goals.
- Serve as Network connector, convener, community builder and knowledge broker.
- Advance policy that supports the Network's collective vision and mission.
- Raise awareness of the CIS® model and our collective impact.

Our Network Commitment to Educational Equity

Children and youth deserve a caring community that empowers them to achieve their goals in the classroom and beyond. To do so, racism and other inequalities in our educational system and society must be acknowledged and address. The Communities In Schools of Washington (CISWA) network exists to build on student strengths and overcome systemic barriers through advocacy, partnership, and individual social-emotional supports.

Organizational Structure



Our Footprint

42 School Districts

205 K-12 Schools

5,982 Students
Receiving
Individualized Support

108,255 Students
Served



1. CISWA State Office

2. Benton-Franklin

Benton County
Franklin County

3. Blue Mountain Region

Umatilla County (Oregon)
Walla Walla County

4. Central Washington

Yakima County

5. Greater King County

King County

6. Lakewood

Pierce County

7. North Central Washington

Grant County
Chelan County
Douglas County

8. Peninsula

Kitsap County
Pierce County

9. Puyallup

Pierce County

10. Rural Eastern Washington

Ferry County
Stevens County

11. Spokane County

Spokane County

12. South King County

King County

13. Tacoma

Pierce County

14. Whatcom-Skagit

Skagit County
Whatcom County

All Demographic on this page represent CIS Programming during 2023-2024

CISWA ANNUAL REPORT 2023-2024 | 6

Why CISWA

At CISWA, we take a holistic approach to student success, addressing both academic and non-academic barriers through our proven Integrated Student Supports (ISS) model. Embedded within school systems yet operating as an independent organization, we have the flexibility to advocate effectively for students and ensure they receive the resources they need. By partnering with us, you play a direct role in removing obstacles and creating pathways for students to thrive.

Our Site Coordinators are trained professionals embedded within schools, fostering strong community relationships and engaging volunteers to meet student needs. They assess the unique challenges of the school community, broker resources, and connect students with essential support services, including counseling, food assistance, academic tutoring, and mentorship programs. By building partnerships with local organizations, businesses, and volunteers, they create a network of support that helps remove barriers to success. Through these personalized connections and resource coordination, they ensure that every student has access to the tools, guidance, and opportunities.



Statewide Challenges



Chronic Absenteeism

More than **30%** of students in Washington miss **10 or more** days of school each year, creating significant barriers to academic success. Addressing this issue is critical to keeping students engaged and on track.



Basic Needs & Support Services

Many students lack essential resources such as housing, school supplies, clothing, food, and mental health support. Last year alone, our Site Coordinators distributed **over 338,000** basic needs items to ensure students could focus on learning.



Mental Health Supports

With **over 250 hours** of certified professional training, including Youth Mental Health First Aid (YMHFA), school-based staff are prepared to support students facing challenges such as trauma and housing insecurity.



Digital Equity, Access & Navigation Support

Underserved students continue to face challenges in accessing reliable technology. Through our Digital Navigation program, we supported **around 20,000** students statewide last year, helping bridge the digital divide.

Supports & Services

Tier I Supports



Widely-available services designed to foster a positive school climate and address school-level risk factors.

Tier II Supports



Targeted services provided in a group setting to students with a common need.

Tier III Supports



Intensive, individualized services typically provided in a one-on-one setting to students with highly specific needs.

Academic Assistance

4,448 Hours

Tutoring Support
Homework Guidance
Confidence Building



Attendance

3,716 Hours

Barrier Identification
Incentive Programs
Progress Monitoring



Basic Needs

338,000 Items

Food Access
Housing Stability
Wellness Support



Behavioral Interventions/Modifications

4,227 Hours

Structured Strategies
Positive Reinforcement
Decision Empowerment



College and Career Preparation

1,018 Hours

Career Exploration
Exam Readiness
Future Planning



Civic Engagement

728 Hours

Community Service
Leadership Growth
Social Responsibility



Digital Equity

100,198 Hours

Technology Access
Navigation Support
Tech Literacy



Enrichment/Motivation

15,107 Hours

Creative Expression
Personal Development
Learning Excitement



Family Engagement

5,182 Hours

School Partnerships
Advocacy Programs
Event Coordination



Life/Social Skills

11,617 Hours

Leadership Development
Digital Literacy
Critical Thinking



Physical Health

700 Hours

Medical Services
Fitness Education
Nutrition Awareness



Professional Mental Health

787 Hours

Counseling Access
Emotional Support
Crisis Management



26,212 Volunteer Hours | **2,357** Hygiene Products Distributed | **259,004** Food Items Provided

Students Who Met or Made Progress Towards Their Goals*



Behavior: 90%



Attendance: 77%



K-11th Retained: 90%
(Promoted/Retained)



Social-Emotional: 93%



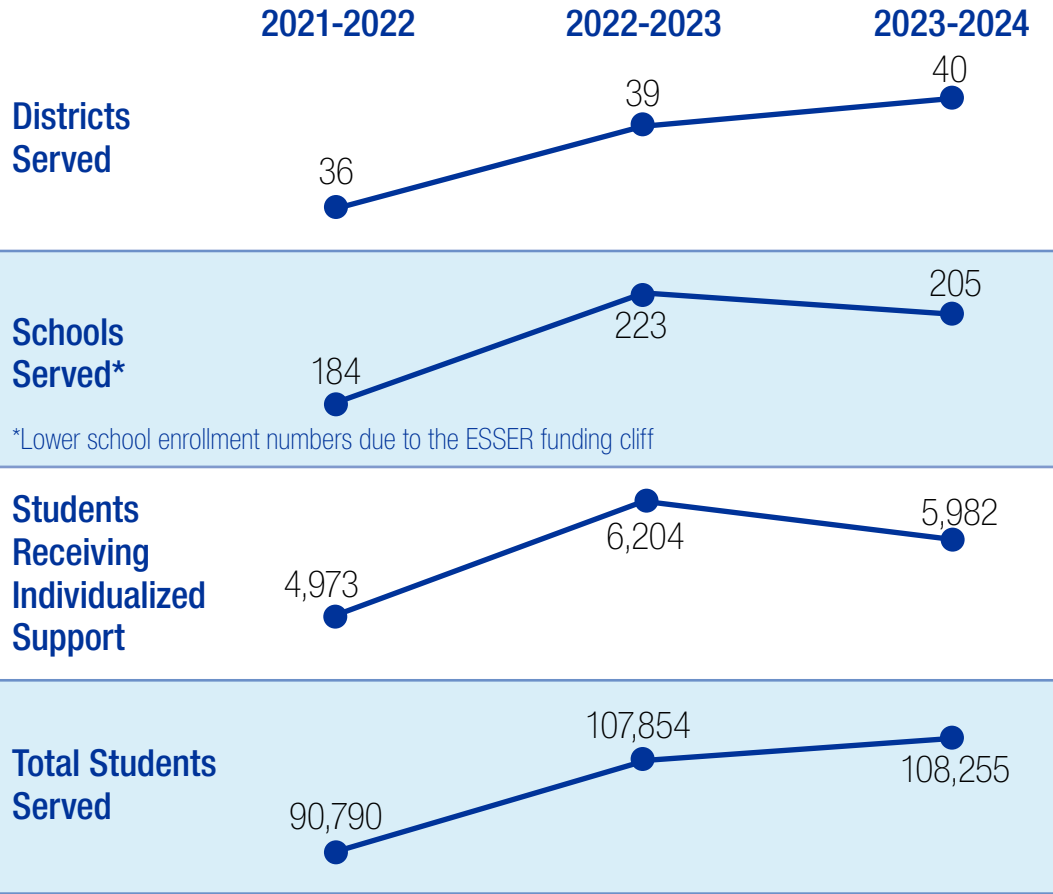
Coursework: 88%



12th Graduated: 86%
(Graduated/GED/Retained)

*Demographic represents 5,982 students receiving individualized support during 2023-2024
CISWA ANNUAL REPORT 2023-2024 | 8

Our Impact



CIS Programming Educational Levels Breakdown		
	2022-2023	2023-2024
K to 12	8	13
Elementary School	110	96
Middle School	56	54
High School	45	29
Other	3	13
Other schools include early learning centers, alternative high schools, and/or community-based sites.		

Students Receiving Individualized Supports Demographics**		
32%	White	28%
28%	Hispanic/Latine	18%
18%	Multiracial	
13%	Black	3%
3%	Asian	
2%	Native Hawaiian/Pacific Islander	
2%	Other/Unknown	1%
1%	American Indian	
6%	LGBTQIA+	79%
79%	Exposed to Trauma	

2023-2024 Statewide Comparison				
1,100,059	LOW INCOME	ENGLISH LANGUAGE LEARNERS	EXPERIENCING HOMELESSNESS	FOSTER CARE
Students Enrolled in Washington Public Schools (2023-2024 Data from OSPI)	50.1%	14.3%	3.7%	0.3%
108,255	88%	26%	9%	2%
Students Receiving CISWA Support**				

**Demographic represents 5,982 students receiving individualized support during 2023-2024

Tackling Challenges with Collaboration

Better Together Conference

The 2024 Better Together Conference was a milestone for CIS of Washington, uniting over 200 site coordinators, program managers, and partners for the first statewide gathering. Thanks to donor and sponsor support, the event fostered collaboration and learning through mainstage sessions and workshops on key topics like vicarious trauma, behavior management, and family engagement. With 81% of attendees working in schools and many joining their first CIS event, the conference reinforced the network's commitment to professional growth and student support. Plans for 2025 include a focus on restorative justice, trauma-informed care, and resource navigation.

Investing in Success

As CISWA wrapped up summer and prepared for the new school year, we reflected on a season of impactful training and professional development. Highlights included the Program Manager Retreat, which fostered collaboration and problem-solving, and Youth Mental Health First Aid training, equipping staff to support students' well-being. Special thanks to facilitators Nikki Ziegler and Erica Limón-Trefielo, and guest speaker Nick Wu from CIS Los Angeles. Looking ahead, CISWA is focusing on leadership development, HR training, and ongoing collaboration. We invite supporters to help sustain these efforts, ensuring students get the resources they need to thrive.

Partnering for Health Equity & Mental Well-Being

CISWA is proud to partner with Cambia Health Foundation (CHF) to support students and families across Washington. Over the next year, CHF will provide \$25,000 to promote health equity, expand mental health services, and address social drivers of health. CISWA site coordinators help students facing mental health challenges, financial hardship, and community support gaps through school-wide initiatives, targeted support, and one-on-one assistance. With CHF's support, CISWA will enhance training in health equity, Trauma-Informed Care, and Mental Health First Aid. This partnership strengthens our shared commitment to breaking down barriers and creating lasting change for Washington's youth.

Network Thrives at 2024 Student Support Institute

The 2024 Student Support Institute (SSI) was a key professional development event for CISWA, offering strategies to better support students. Hosted by CIS National, the three-day hybrid conference featured discussions, workshops, and networking on topics like attendance, career readiness, and family engagement. CISWA leaders emphasized tier-one supports, chronic absenteeism, and national partnerships. First-time attendee Addison Fairbank found it transformative for refining communication strategies. Insights from SSI are already shaping CISWA's professional development, staff training, and social-emotional learning efforts, reinforcing our mission to help students stay in school and reach their full potential.



Explore
More
Stories
of
Impact:

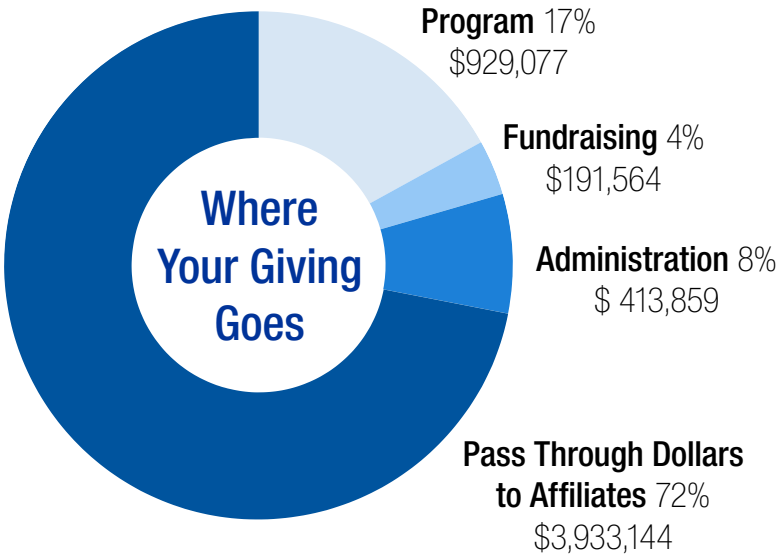
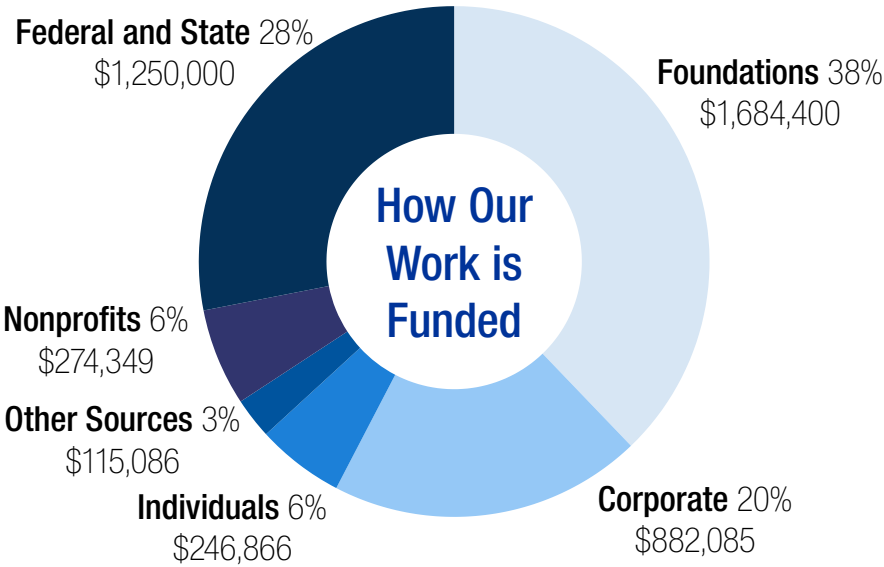


Follow us:   

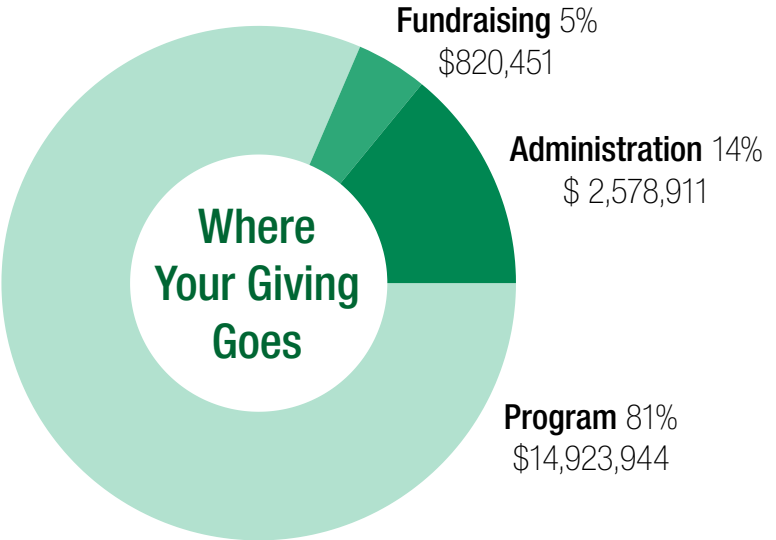
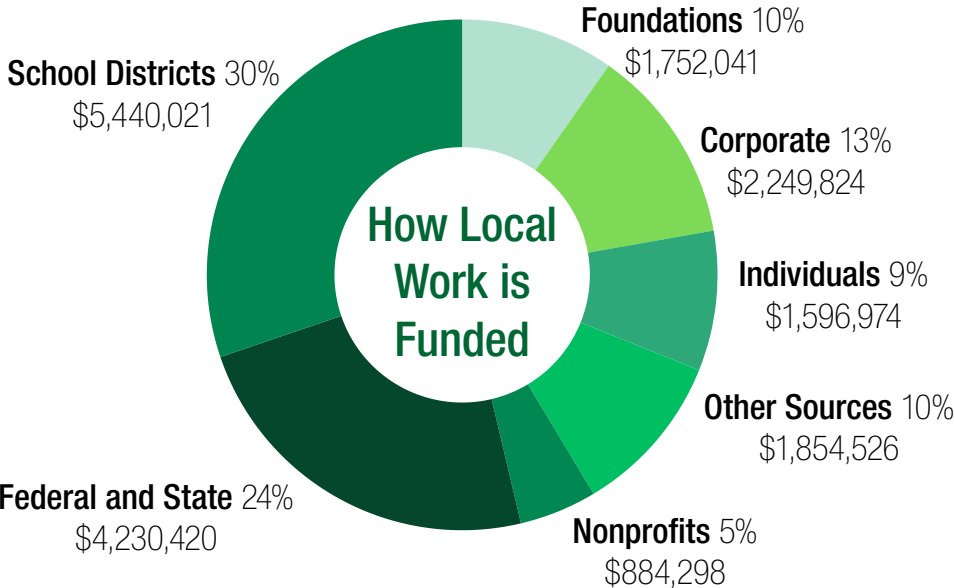
State & Affiliate Financials

State Office Totals: Revenue \$4,452,786 **| Expenses** \$5,467,643*

*Expenses are higher than revenue due to spending down funds recognized in previous fiscal years.



Affiliate Network Totals: Revenue \$19,544,200 **| Expenses** \$18,323,305



About Us

Our History

Communities In Schools (CIS) was founded in 1977 by Bill Milliken with the vision of helping students succeed by addressing the barriers outside the classroom that can hinder their academic performance. Over the years, CIS has grown to become the nation's leading organization focused on integrating social services and education to support at-risk students. Communities In Schools of Washington (CISWA) became part of this network in 1985, providing vital programs and services to students throughout the state. With a commitment to ensuring every student has the support they need to succeed, CISWA works with schools, community partners, and families to foster student achievement and stability.

Thank You

Thank you to our State Office Staff, Board of Directors, and Washington State Network Staff for your dedicated time to form the Communities In Schools of Washington family.

To our Volunteers and Donors, thank you for being #AllinforKids.

Board Members *As of February 2025*

Hannah Gbenro

Chair
21st Century Possibilities

Tod Droppelman

Vice Chair
Costco Wholesale

Heather Andersen

Secretary
Community Member

Donna Clark

Treasurer
Community Member

Kristin Barsness

Barsness Group

Michael Halliday

Pierce County Emergency
Management

Farrah Kalotay

Culture Catalyst

Julie Kerby

Earth Dance Design

James Payne

U.S. Bank

Rayann Silva

University of Washington SMART
Center

State Office Staff *As of February 2025*

Erica Limón-Trefielo

Interim State Director

Carina Raddatz

Development Director

Kayla McKinney

Director of Finance and
Operations

Grace Fritzke

Program Support Specialist

Joanie Fuller

Administrative Support
Coordinator

Haley Hanson

Grants Manager

Nova Hernandez

People Partner

Reema Patel

Communications Manager

Megan Petersen

Marketing and Communications
Coordinator

Nikki Ziegler

Program & Impact Director

Our 2023-2024 Sponsors



Tax ID: 91-1541026
1001 Pacific Avenue, Suite 240, Tacoma, WA 98402
info@ciswa.org