



CELEBRATING OUR SECOND YEAR IN CENTRAL WA

August 2022 - June 2023

CIS of Central Washington finished strong in their second year in large part due to the dedicated work of our Student & Community Advocates, your contributions, and the support from our community. Thank you for partnering with us to support students and their families. We are looking forward to growing our community partners and impact in the years to come.

Primary Race/ Ethnicity Served	Primary Age Group Served	Primary Population Served
Hispanic or Latinx	Children (6-13)	Economically Disadvantaged

CIS Mission: At Communities In Schools (CIS), we surround students with a community of support, empowering them to stay in school and achieve in life.

CIS CENTRAL WASHINGTON

Affiliate Quick Glance

Organizational Background

Many students and their families have a hard time accessing and navigating the maze of public and private services. There may be ample resources in a community, but rarely is there someone on the ground who is able to connect these resources with the schools and students that need them most. Through a school-based coordinator, we bring community resources into schools to empower success for all students by removing barriers for students furthest from educational justice, keeping kids in schools and on the path to graduation and leveraging evidence, relationships and local resources to drive results. At Communities In Schools, we believe that every student, regardless of race, gender, ability, zip code, or socioeconomic background has what they need to realize their full potential in school and beyond. We walk by their side, in their communities, to challenge the systems and barriers that stand between them and their success in life.

CIS of Central WA

Communities in Schools of Washington State began operations in 1996 and has expanded across the state, serving thousands of children each year. The CISCW affiliate opened during the 2021-2022 school year to begin serving youth in the Yakima school district.

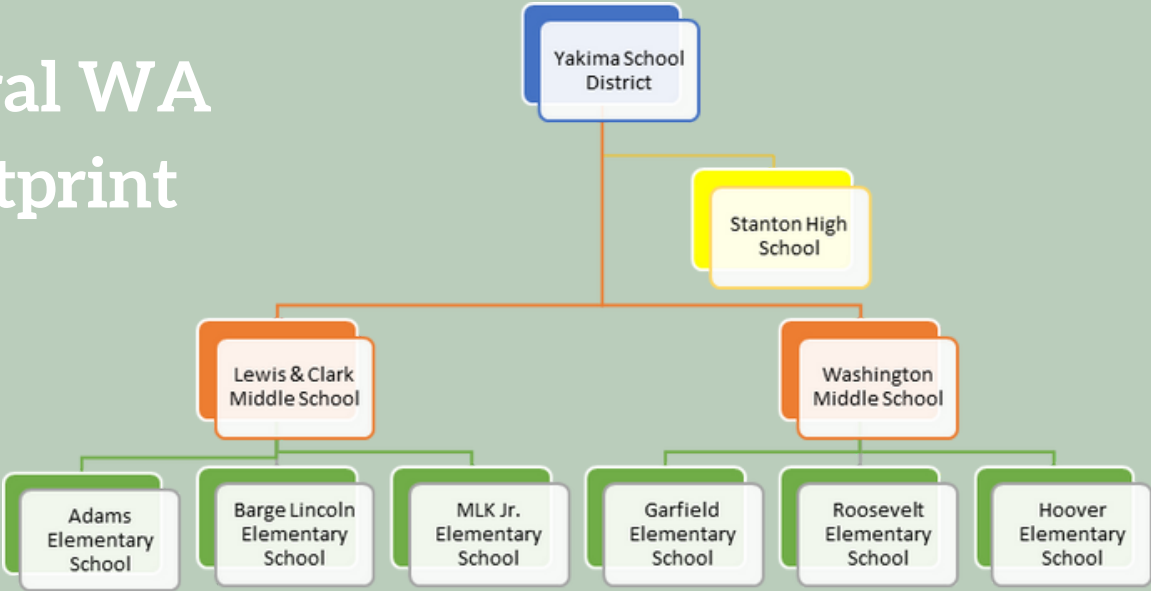
CIS Central WA Staff Diversity

Communities in Schools of Central Washington serves a large Latinx, Indigenous, and multi-racial community. CIS Central Washington staff is reflective of this community; 93% of CIS Central staff belong to BIPOC communities, including the Executive Director, and 70% of the staff are female identifying.

CIS CENTRAL WA FOOTPRINT

- (14) Site Coordinators
- Adams Elementary, 1
- Barge-Lincoln Elementary, 2
- Martin Luther King Jr. Elementary,2
- Stanton Academy, 2
- Washington Middle School, 2
- Lewis & Clark Middle School, 2
- Roosevelt Elementary, 1
- Hoover Elementary, 1
- Garfield Elementary, 1

Central WA Footprint

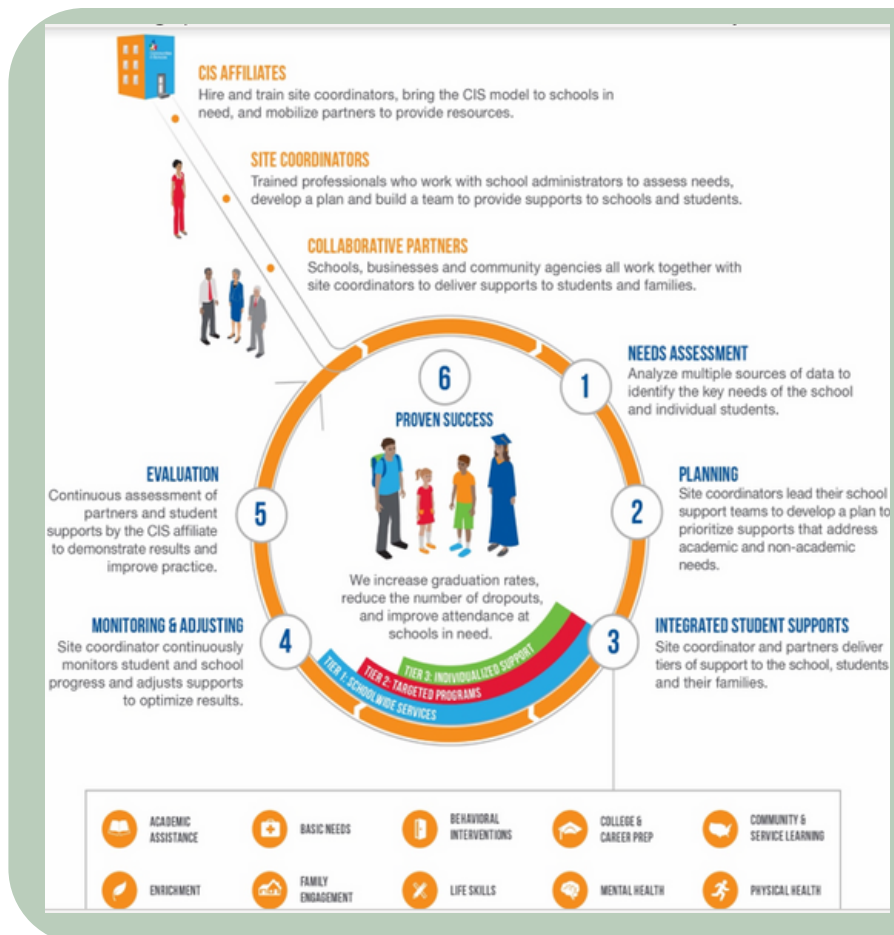




Community Partners

Alice's Kids
Community Church's
DSHS
ESD 105
Good Times Tattoo Shop
Life Gate
Local Laborers' Union 348
OIC of Washington
Tacos El Rey
Triumph Treatment Center
Salvation Army
Work Source
Yakima Valley Farm Workers Clinic

Communities In Schools Model

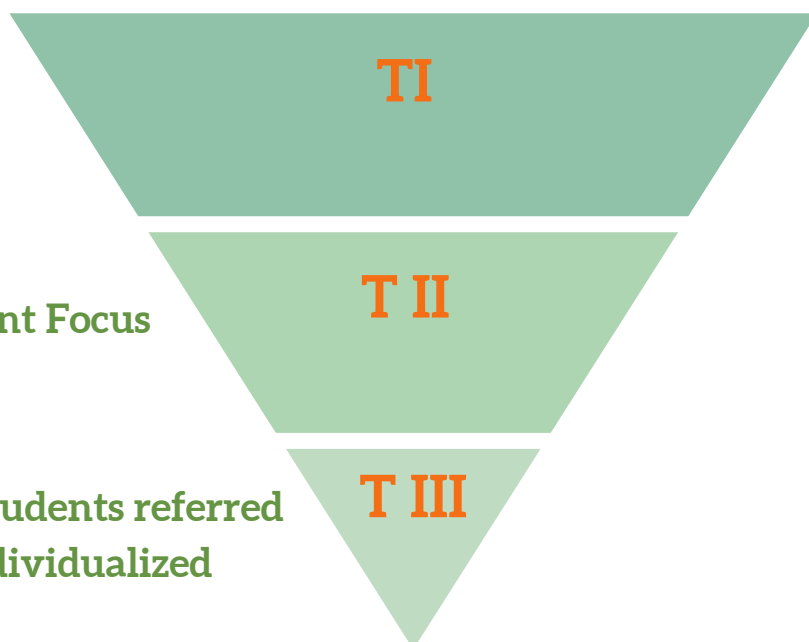


Communities In Schools - Tiers of Support

Tier I Supports: Whole School Supports

Tier II Supports: Case- Managed Student Focus Groups

Tier III Supports: Case Managed Students referred to CIS Site Coordinator for Individualized Services



Top Five Whole School Support Categories:

Academic Enrichment: Clubs, Motivational Incentives, Awards
Behavioral: Classroom Intervention, Attendance & Bullying Prevention
Social Skills : Mentoring, SEL, Life Skills
Family Engagement: Family Check-ins, Resource Sharing, Parent Workshops
Academic Enrichment: Clubs, Motivational Incentives, Awards



Basic Needs/Tier 1 Monetary Values:

Schoolwide Basic Needs / Resources Provided

Total Value Contributed to Yakima School District: **\$313,176**

Total value of Basic Need items/Resources: **\$249,197.75**

Total Value of Tier 1 Services/Resources: **\$63,978.30**

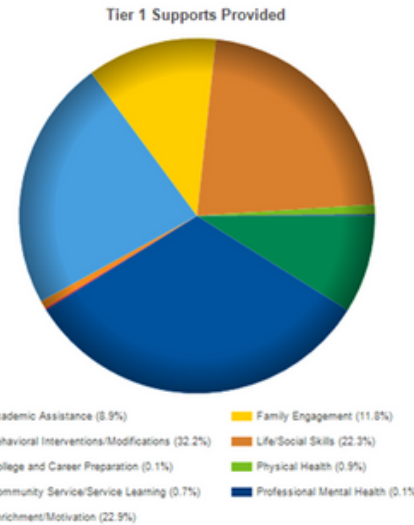
Tier I Supports

Number of Supports: **826**

Number of Hours: **2,263 hours**

Number of Parents Served: **3,466**

Basic Needs Items: **35,228**



Tier II Supports

Number of Tier II Supports: **411**

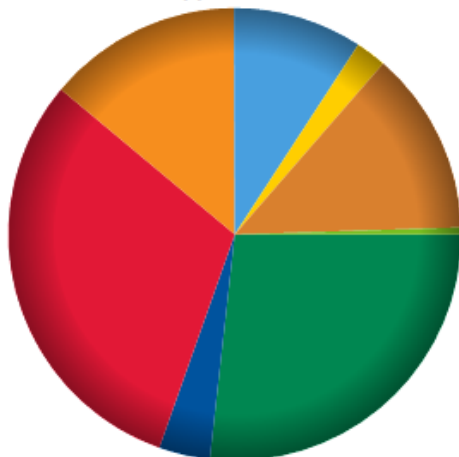
Highest Tier II Supports:

Behavioral Interventions

Academic Assistance

Case Management

Tier II Supports / Resources



Total Number of Case-Managed Students:

304

Total Number of Times Students Served Under Tier 1 Services: **71,050**

Total Number of Times Parents Served: **3,466**

Top Parent Services Provided:

Basic Needs

Food, Hygiene Products & Clothing

Resources/Supports:

Parent Education and Community Supports

Total Number of Basic Need items Distributed:

35,444

Tier III Supports

Number of Tier III Supports: **2,792**

Highest Tier III Supports:

Behavioral Interventions

Academic Assistance

Life & Social Skills

Tier III Supports / Resources

